

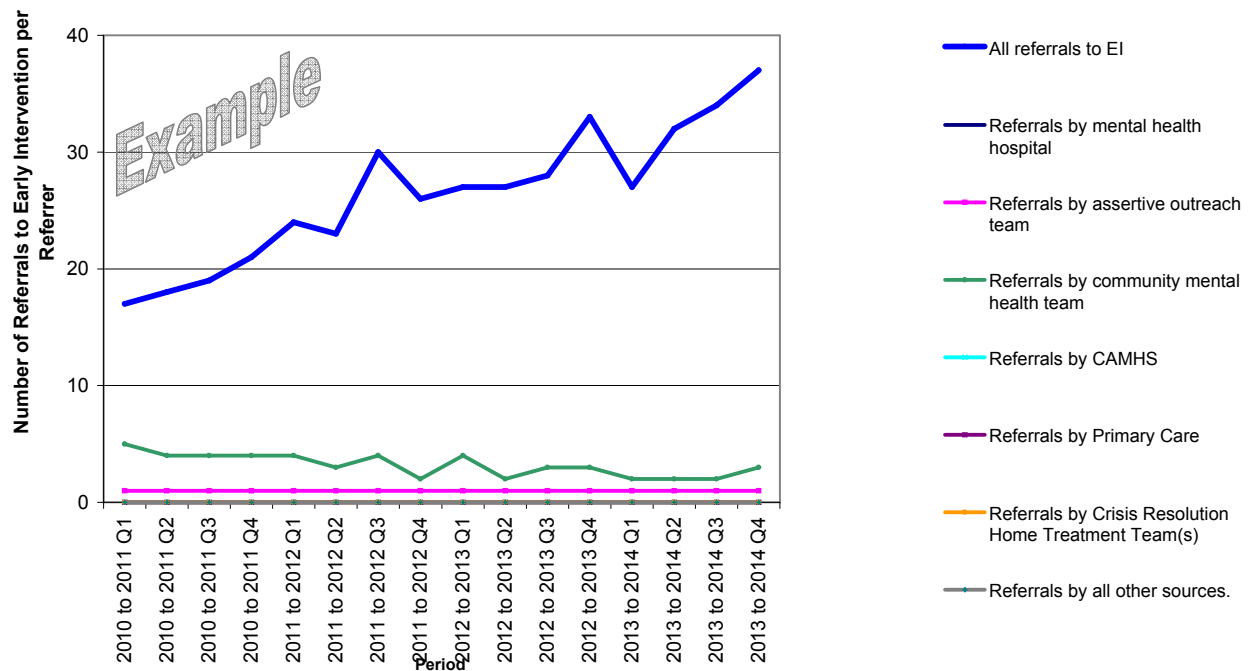
Metrics for the QIPP Work stream for Early Intervention and Community Teams
Edition 1 Example



1 Early Intervention Teams

Chart 1.1 Referrals to Early Intervention by Source

This chart shows the number of referral received by your Early Intervention Team as a total and broken down by source of referral. Using the controls below the chart can show the referrals as an actual number or as a percentage of total number of referrals for each period.



Use this drop down menu to choose to show the referrals to Early Intervention as a count of referrals, or as a percentage.

Number of Referrals to Early Intervention per Referrer



Tick item for inclusion in Chart

- Referrals by mental health hospital
- Referrals by assertive outreach team
- Referrals by community mental health team
- Referrals by CAMHS
- Referrals by Primary Care
- Referrals by Crisis Resolution Home Treatment Team(s)
- Referrals by all other sources.

Table 1.1 New Cases taken on by Early Intervention

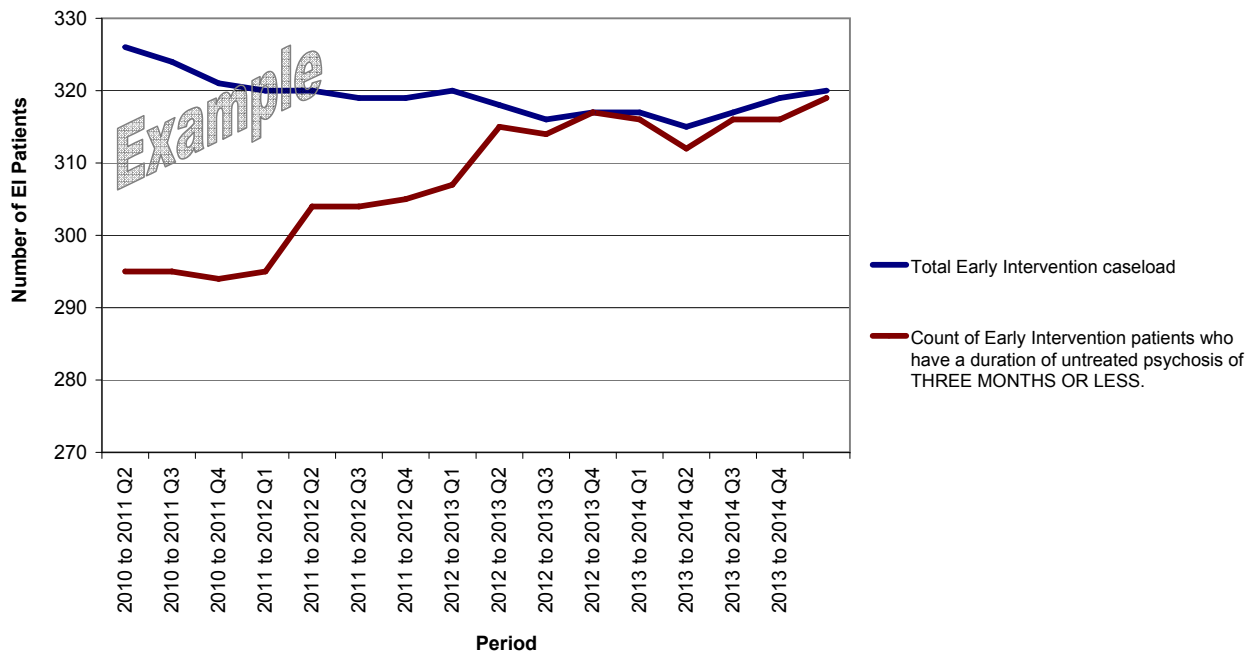
This table shows the number of new cases taken onto the Early Intervention team's "active caseload" per quarter. It shows the annual total as well as whether the rate for each quarter is following an "average trajectory" for each year.

Year	Local Target for New EI Cases per Year	Quarter	Quarterly Average Target (rounded)	Cumulative Total of New EI Cases per Quarter	Estimated Trajectory for achieving Annual Targets for New EI cases
2010 - 2011	90	2010 to 2011 Q1	23	17	Below trajectory
		2010 to 2011 Q2	23	35	Below trajectory
		2010 to 2011 Q3	23	54	Below trajectory
		2010 to 2011 Q4	23	75	Annual Target for new EI cases NOT
2011 - 2012	90	2011 to 2012 Q1	23	24	Exceeding trajectory
		2011 to 2012 Q2	23	47	Exceeding trajectory
		2011 to 2012 Q3	23	77	Exceeding trajectory
		2011 to 2012 Q4	23	103	Annual Target for new EI cases achieved
2012 - 2013	90	2012 to 2013 Q1	23	27	Exceeding trajectory
		2012 to 2013 Q2	23	54	Exceeding trajectory
		2012 to 2013 Q3	23	82	Exceeding trajectory
		2012 to 2013 Q4	23	115	Annual Target for new EI cases achieved
2013 - 2014	90	2013 to 2014 Q1	23	27	Exceeding trajectory
		2013 to 2014 Q2	23	59	Exceeding trajectory
		2013 to 2014 Q3	23	93	Exceeding trajectory
		2013 to 2014 Q4	23	130	Annual Target for new EI cases achieved

Chart 1.2 Average Duration of Untreated Psychosis of Patients of Early Intervention

This chart shows the number of Early Intervention Patients who have a duration of untreated psychosis (DUP) of three months or less. This measure is also an indicator used in the 2010 - 2011 EI DUP CQUIN.

Using the controls below the chart it can show the number of EI Patients with a DUP <= 3 months as an actual number or as a percentage of total number of EI Patients for each period.

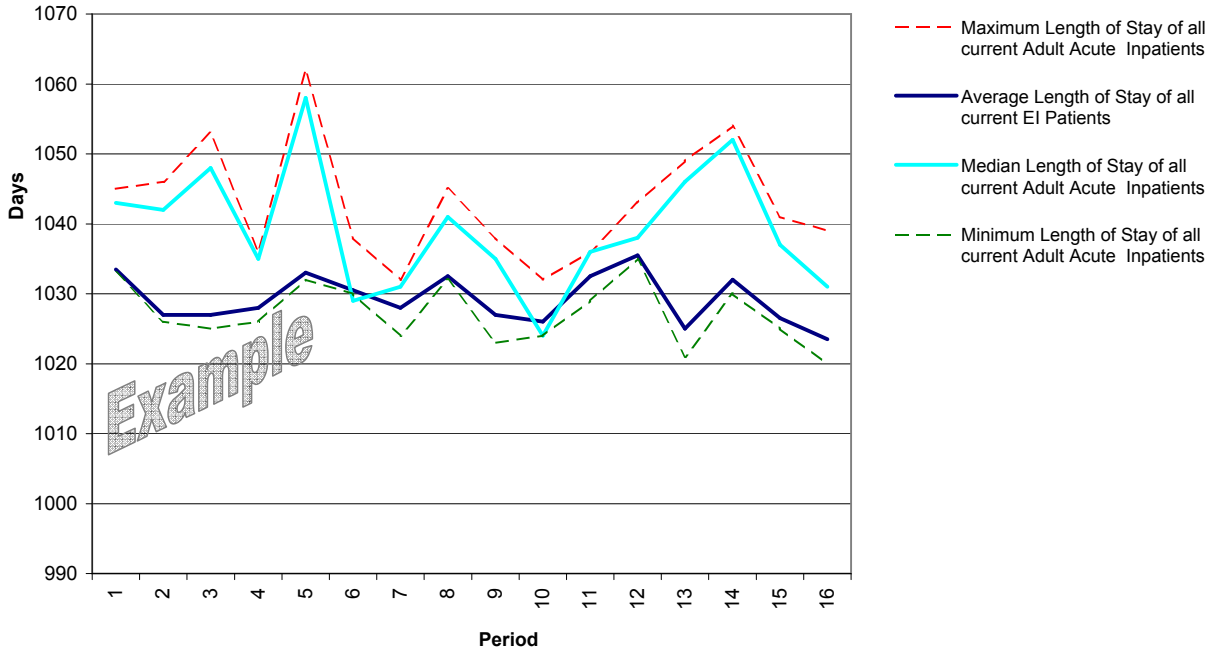


Use this drop down menu to choose to show EI patients with a DUP <= 3 months as a count of or as a percentage.

Show the count of Early Intervention patients who have a duration of untreated psychosis of THREE MONTHS OR LESS as a number

Chart 1.3 Average Length of Stay of Patients of Early Intervention

This chart shows the minimum, average and maximum length of stay (LOS) of patients of the Early Intervention team at the time of this report. The LOS is measured in days starting from the date of patients commencement with Early Intervention to their discharge.



Use this drop down menu to choose to show length of stay in days or years

Show Early Intervention length of stay in days

- Minimum Length of Stay of all current Early Intervention Inpatients
- Maximum Length of Stay of all current Early Intervention Inpatients
- Median Length of Stay of all current Early Intervention Inpatients

Chart 1.4 Referrals from Early Intervention to Crisis Resolution Home Treatment and Acute Inpatient

This chart shows the number of referrals by the Early Intervention team, to Crisis Resolution Home Treatment Team and Acute Inpatients.

It is important to note that referrals to Crisis Resolution Home Treatment and Acute Inpatient are NOT classed as discharges for the purposes of this report because those acute services are considered as adjuncts to Early Intervention care whilst patients are in an acute period, that is, an Early Intervention Team is expected to maintain regular contact with an EI patient during any period of support from the Crisis Resolution / Home Treatment team or an Acute Inpatient Ward.

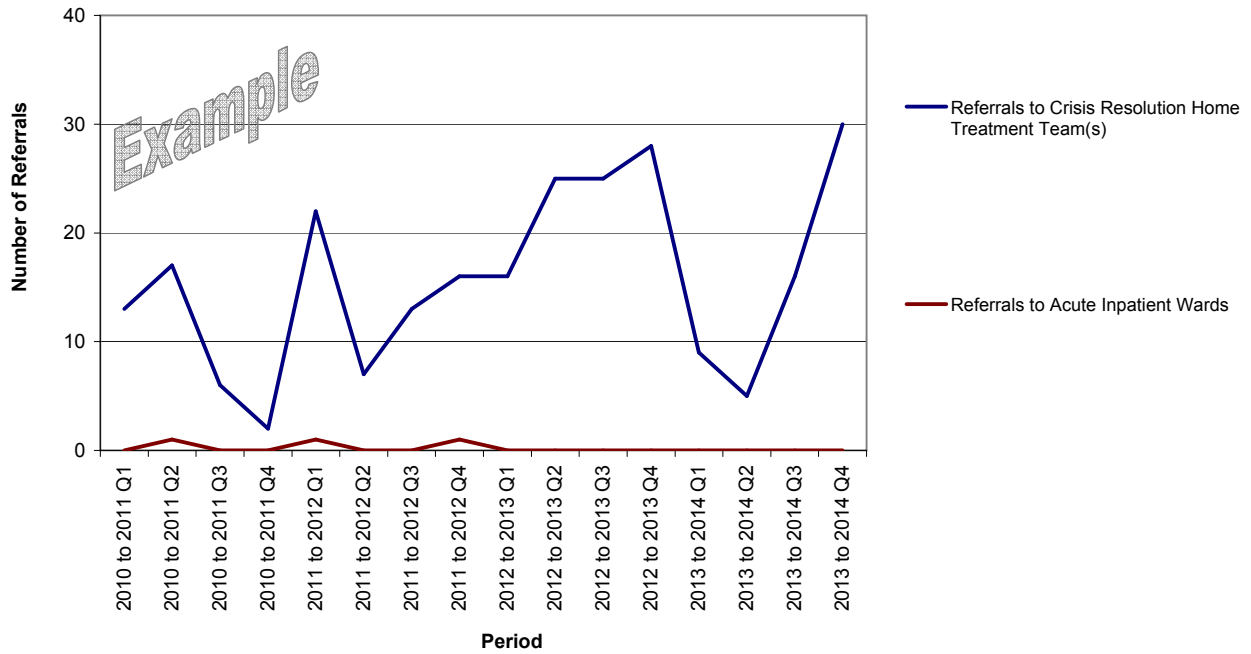
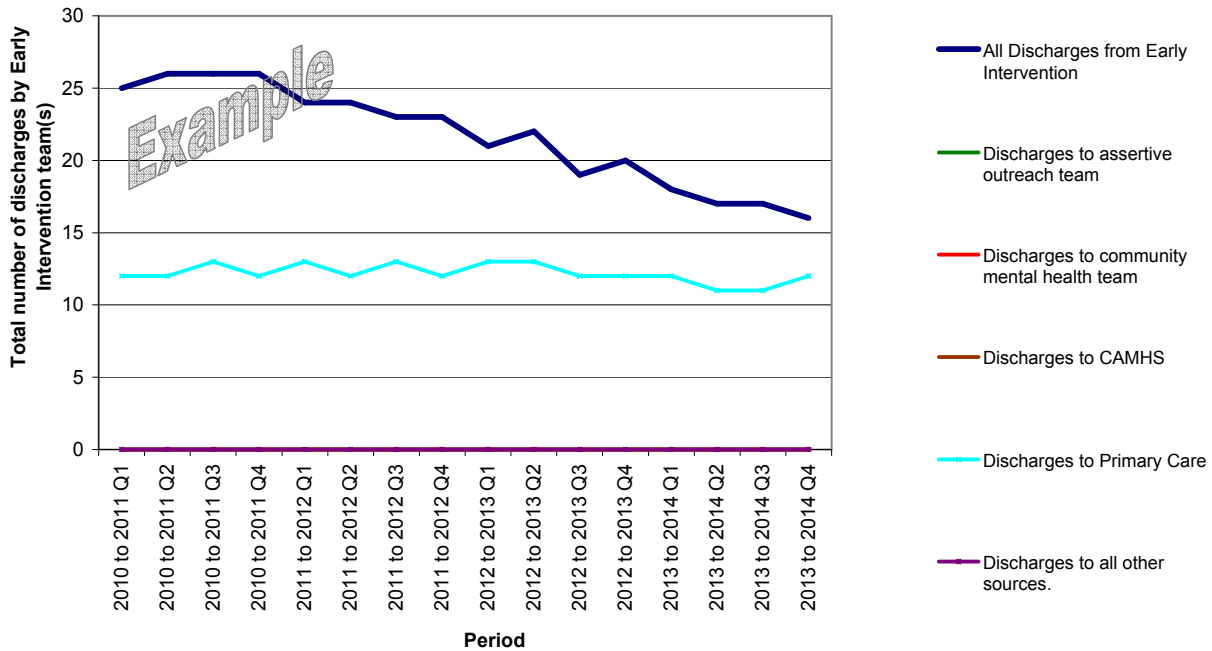


Chart 1.5 Discharges from Early Intervention by Destination

This chart shows the number of patients discharged from Early Intervention Team, that is, patients leaving the Early Intervention Teams having completed an episode of care, typically a 3 year LOS.

Referrals to Crisis Resolution Home Treatment and Acute Inpatient are not classed as discharges, please see Chart 1.4 above for details.

Using the controls below the chart can show the discharges as an actual number or as a percentage of total number of discharges for each period.



Use this drop down menu to choose to show the discharges from Early Intervention as a count or as a percentage.

Total number of discharges by Early Intervention team(s) ▼

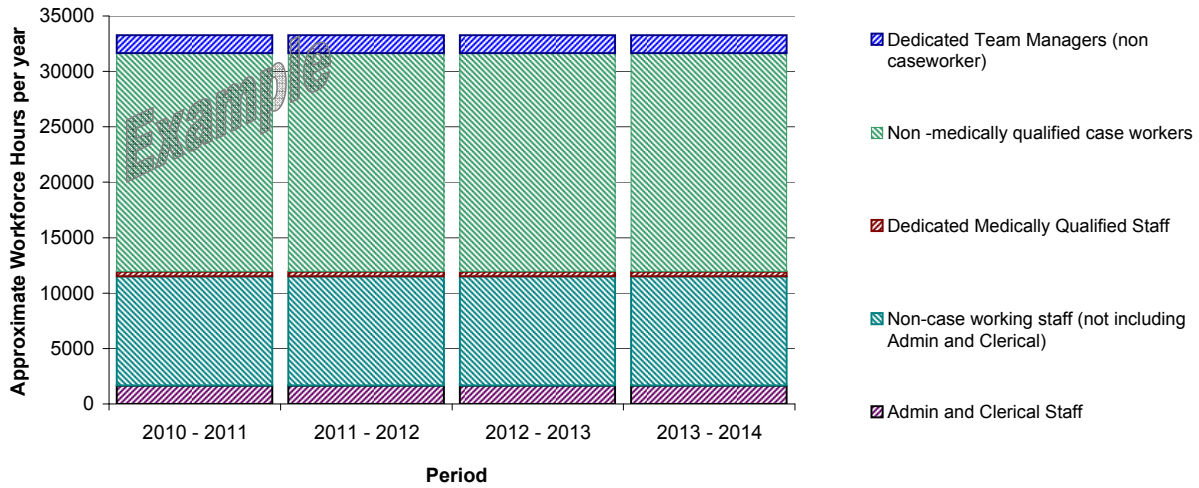
Tick item for inclusion in Chart

- Discharges to assertive outreach team
- Discharges to community mental health team
- Discharges to CAMHS
- Discharges to Primary Care
- Discharges to all other sources.

Chart 1.6 Early Intervention Workforce

This chart and table shows the Early Intervention workforce. The approximate 'hours per year' are calculated on the basis of non medical whole time equivalents being contracted to work 1642.5 hours per year and for medical sessions to be 4 hours each.

The size of a teams workforce can be used to indicate a teams capacity, whilst measuring workforce in hours enables comparisons to be made with caseload sizes and resources. Separate guidance is available on the estimated ratio of Early Intervention patients per whole time member of staff.



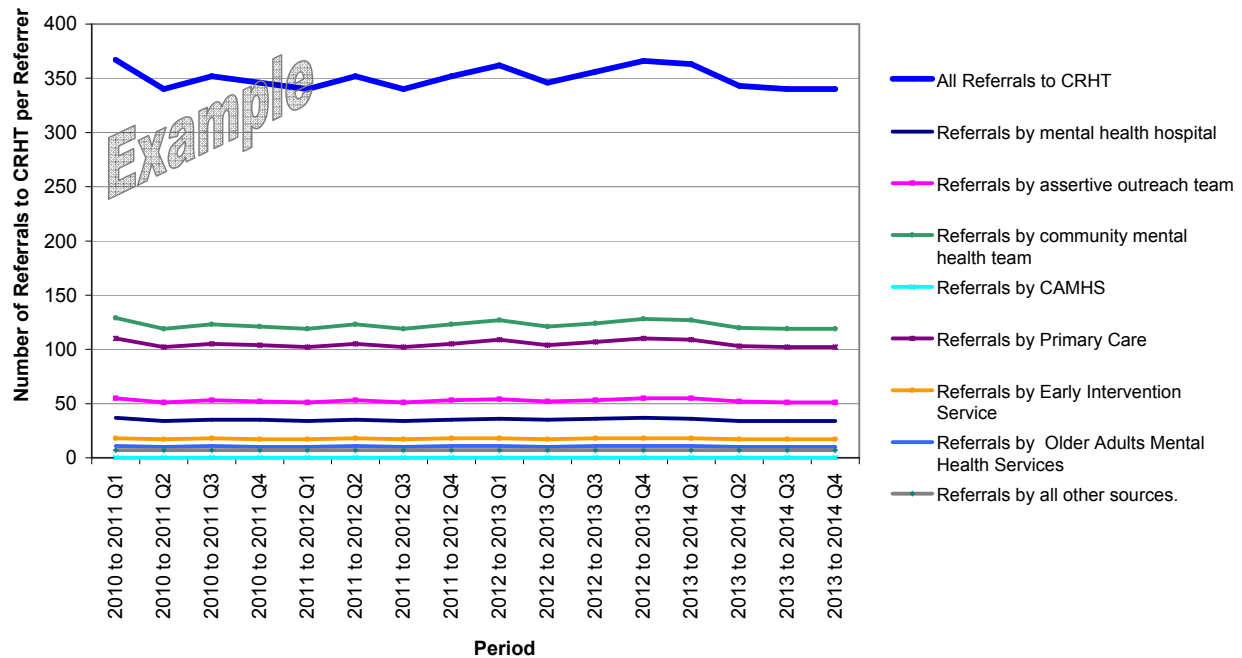
Staff Type	Approximate Hours per year (WTE's or medical sessions) per Staff Type			
	2010 - 2011	2011 - 2012	2012 - 2013	2013 - 2014
Dedicated Team Managers (non caseworker)	1642.5 (1 WTE's)	1642.5 (1 WTE's)	1642.5 (1 WTE's)	1642.5 (1 WTE's)
Non -medically qualified case workers	19710 (12 WTE's)	19710 (12 WTE's)	19710 (12 WTE's)	19710 (12 WTE's)
Dedicated Medically Qualified Staff	416 (104 Medical Sessions)	416 (104 Medical Sessions)	416 (104 Medical Sessions)	416 (104 Medical Sessions)
Non-case working staff (not including Admin and Clerical)	9855 (6 WTE's)	9855 (6 WTE's)	9855 (6 WTE's)	9855 (6 WTE's)
Admin and Clerical Staff	1642.5 (1 WTE's)	1642.5 (1 WTE's)	1642.5 (1 WTE's)	1642.5 (1 WTE's)
All	33266 hours per year	33266 hours per year	33266 hours per year	33266 hours per year

2 Crisis Resolution Home Treatment Teams

Chart 2.1 Referrals to CRHT by Source

This chart shows the number of referrals received by your Crisis Resolution Home Treatment Team as a total and broken down by source of referral.

Using the controls below the chart can show the referrals as an actual number or as a percentage of total number of referrals for each period.



Use this drop down menu to choose to show the referrals to CRHT as a count of referrals, or as a percentage.

Number of Referrals to CRHT per Referrer

Tick item for inclusion in Chart

- Referrals by mental health hospital
- Referrals by assertive outreach team
- Referrals by community mental health team
- Referrals by CAMHS
- Referrals by Primary Care
- Referrals by Early Intervention Service
- Referrals by Older Adults Mental Health Services
- Referrals by all other sources.

Table 2.1 Referrals to CRHT from Inpatient (Facilitated Discharge)

This table shows how many referrals to CRHT were from the Acute Mental Health Inpatient Wards, suggesting referral to CRHT to facilitate early discharge.

The shaded cells show the referrals as a percentage of all referrals received by the CRHT - a CQUIN measure for 2010 - 2011 - and you can use the controls on the Commissioning Data Input sheet to set your expected range for these percentages.

Period	Total number of referrals to CRHT	Number of referrals to CRHT from Inpatient (not including PICU) - Facilitated discharge	Referrals to CRHT from Inpatient as % of total referrals received by CRHT	Referrals to CRHT from Inpatient as % of total discharges from Acute Inpatient Wards
2010 to 2011 Q1	367	37	10.08%	20.00%
2010 to 2011 Q2	340	34	10.00%	20.00%
2010 to 2011 Q3	352	35	9.94%	20.31%
2010 to 2011 Q4	346	35	10.12%	20.19%
2011 to 2012 Q1	340	34	10.00%	19.66%
2011 to 2012 Q2	352	35	9.94%	19.64%
2011 to 2012 Q3	340	34	10.00%	19.77%
2011 to 2012 Q4	352	35	9.94%	20.45%
2012 to 2013 Q1	362	36	9.94%	19.77%
2012 to 2013 Q2	346	35	10.12%	19.39%
2012 to 2013 Q3	356	36	10.11%	19.79%
2012 to 2013 Q4	366	37	10.11%	19.79%
2013 to 2014 Q1	363	36	9.92%	20.00%
2013 to 2014 Q2	343	34	9.91%	20.21%
2013 to 2014 Q3	340	34	10.00%	20.45%
2013 to 2014 Q4	340	34	10.00%	19.64%

Key to Table 1.1

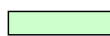

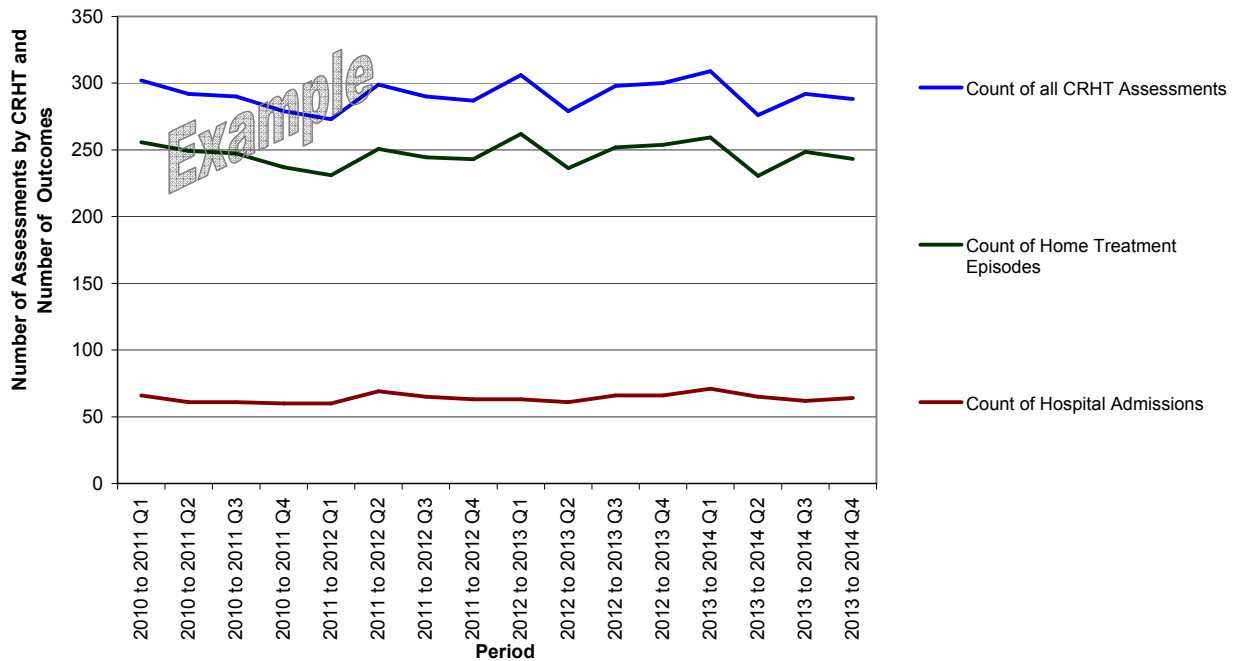
-  = Referral rate to CRHT from Inpatient is within the expected range of 10% and 15% of all referral received
-  = Referral rate to CRHT from Inpatient is outside of the expected range of 10% and 15% of all referrals received

Chart 2.2 Assessments by CRHT

This chart shows the assessments carried out by your Crisis Resolution Home Treatment Team that led to patients being admitted into Acute MH Hospital.

Using the controls below the chart can show those admissions as a percentage of total number of assessments carried out by the Crisis Resolution Home Treatment team or as the actual number.



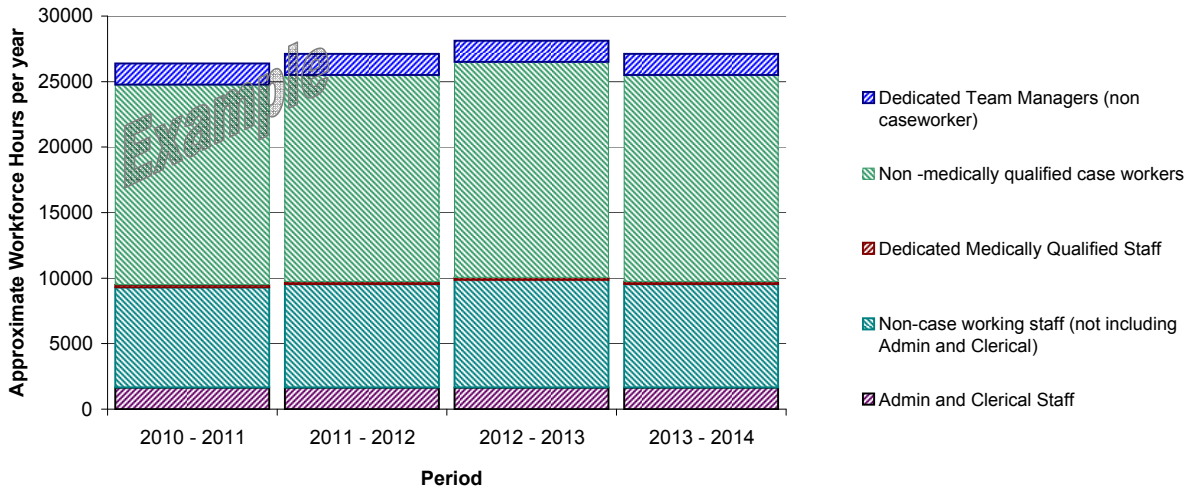
Use this drop down menu to choose to show the assessments by CRHT and any resulting admissions as a count or as a percentage.

Number of Assessments by CRHT and Number of Outcomes



Chart 2.6 CRHT Workforce

This chart and table shows the Crisis Resolution Home Treatment workforce for each year. The approximate 'hours per year' are calculated on the basis of non medical whole time equivalents being contracted to work 1642.5 hours per year and for medical. The size of a teams workforce can be used to indicate a teams capacity, whilst measuring workforce in hours enables comparisons to be made with caseload sizes and resources. Separate guidance is available on the workforce requirements of Crisis Resolution Home Treatment.

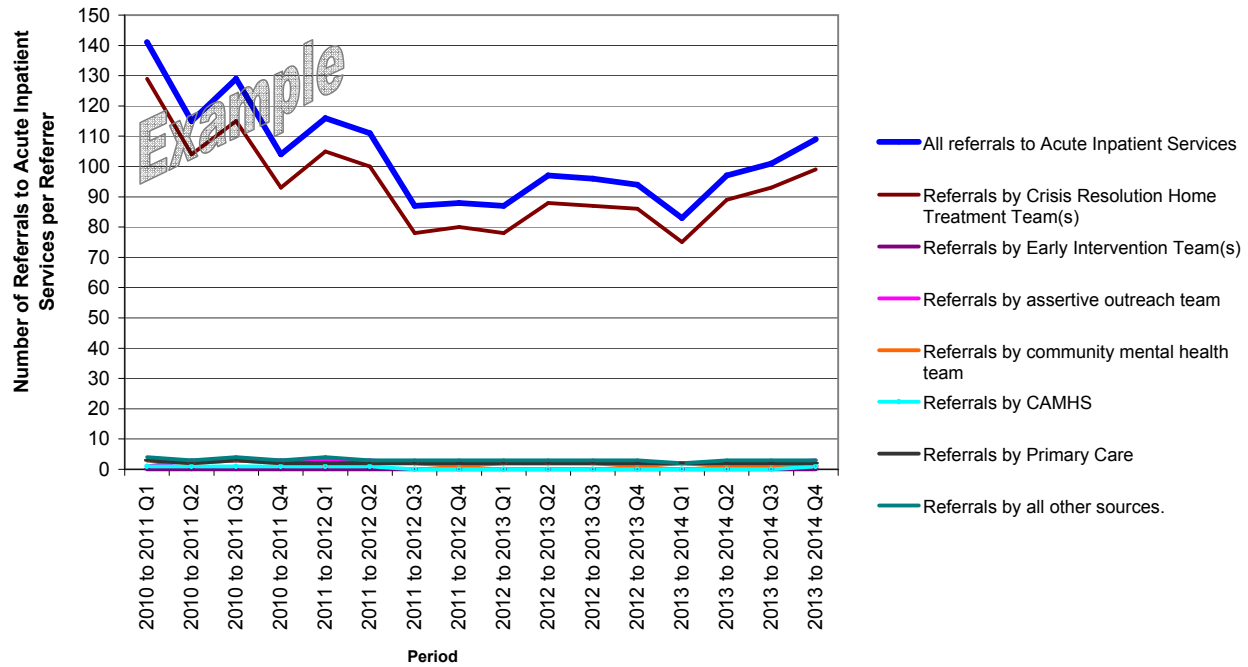


Staff Type	Approximate Hours per year (WTE's or medical sessions) per Staff Type			
	2010 - 2011	2011 - 2012	2012 - 2013	2013 - 2014
Dedicated Team Managers (non caseworker)	1642.5 (1 WTE's)	1642.5 (1 WTE's)	1642.5 (1 WTE's)	1642.5 (1 WTE's)
Non -medically qualified case workers	15275.25 (9.3 WTE's)	15768 (9.6 WTE's)	16425 (10 WTE's)	15768 (9.6 WTE's)
Dedicated Medically Qualified Staff	192 (48 Medical Sessions)	192 (48 Medical Sessions)	192 (48 Medical Sessions)	192 (48 Medical Sessions)
Non-case working staff (not including Admin and Clerical)	7637.625 (4.65 WTE's)	7884 (4.8 WTE's)	8212.5 (5 WTE's)	7884 (4.8 WTE's)
Admin and Clerical Staff	1642.5 (1 WTE's)	1642.5 (1 WTE's)	1642.5 (1 WTE's)	1642.5 (1 WTE's)
All	26389.875 hours per year	27129 hours per year	28114.5 hours per year	27129 hours per year

3 Acute Inpatient Mental Health

Chart 3.1 Referrals to Acute Inpatients Services by Source

This chart shows the number of admissions to Acute Inpatient Wards as a total and broken down by source of referral. Using the controls below the chart can show the referrals as an actual number or as a percentage of total number of referrals for each period.



Use this drop down menu to choose to show the admissions to Acute Inpatient Wards as a count or as a percentage broken down by referrer.

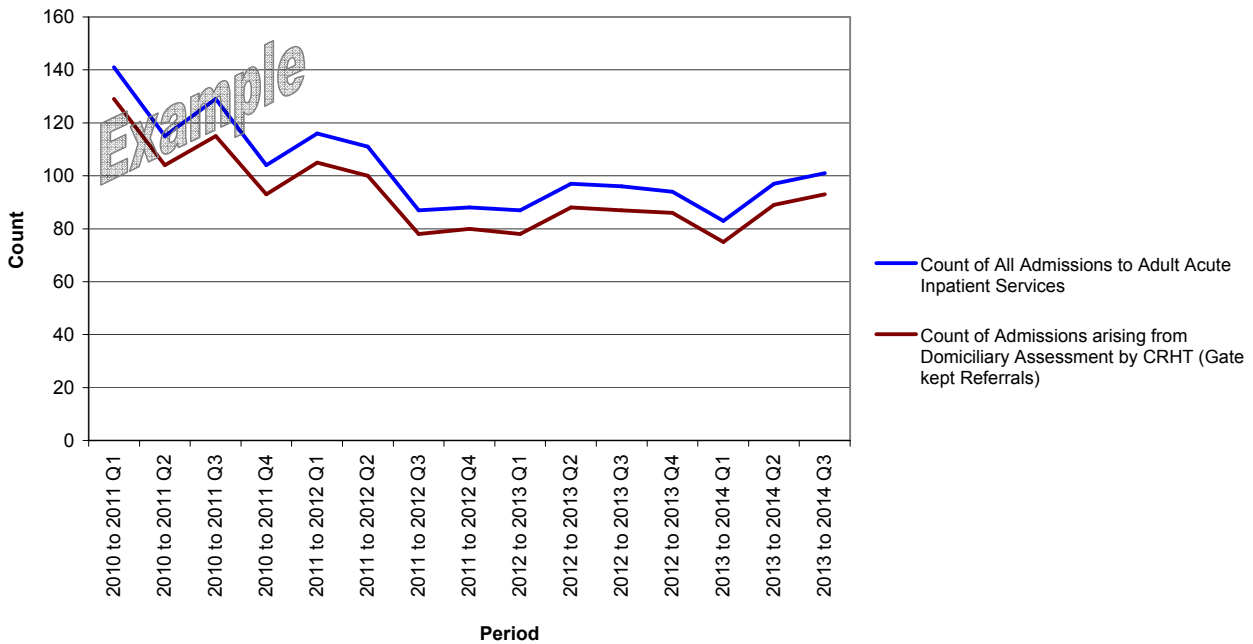
Number of Referrals to Acute Inpatient Services per Referrer ▼

Tick item for inclusion in Chart

- Referrals by Early Intervention Team(s)
- Referrals by assertive outreach team
- Referrals by community mental health team
- Referrals by CAMHS
- Referrals by Primary Care
- Referrals by Crisis Resolution Home Treatment Team(s)
- Referrals by all other sources.

Chart 3.1 CRHT Gate keeping of Acute Inpatients Admissions

This Chart shows the number of patients admitted to Acute Inpatient wards that have been assessed by the Crisis Resolution Home Treatment team PRIOR to admission in accordance with "gate keeping". Using the controls below the chart can show the admissions and "gate keeping" assessments as a count or as percentage of all admissions.

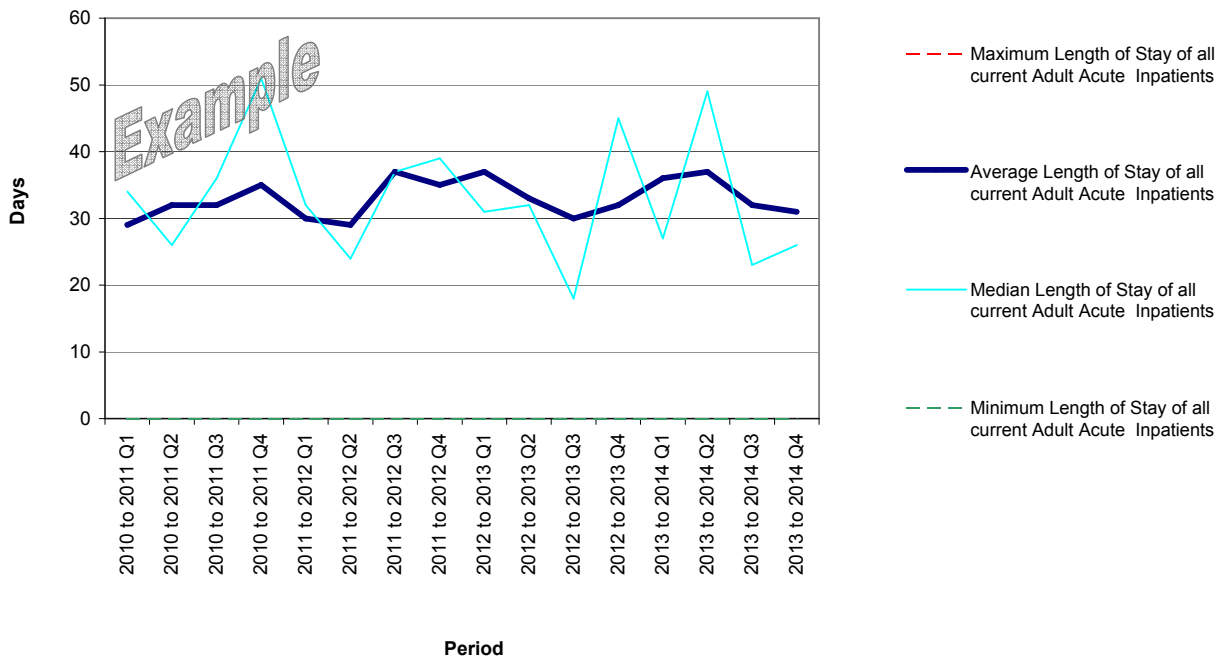


Use this menu to choose to show the admissions as a count or as a percentage.

Count of Hospital Admissions ▼

Chart 3.3 Average Length of Stay of Patients of Acute Inpatient Services

This Chart shows the minimum, average and maximum length of stay of patients of Acute Inpatient wards.



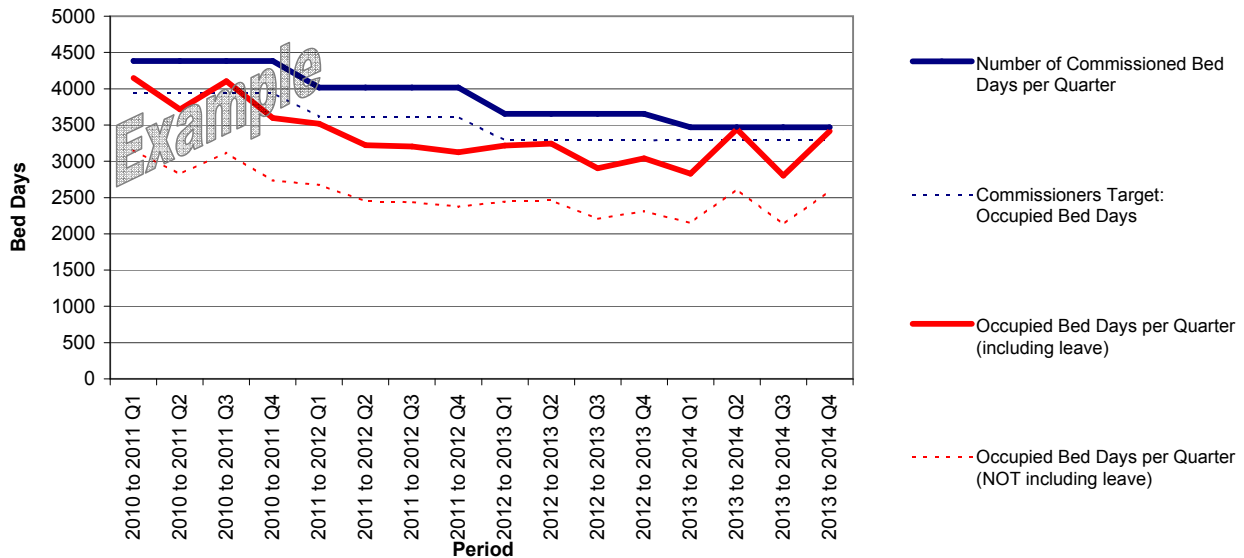
Tick item for inclusion in Chart

- Minimum Length of Stay of all current Adult Acute Inpatients
- Maximum Length of Stay of all current Adult Acute Inpatients
- Median Length of Stay of all current Adult Acute Inpatients

L

Chart 3.1 Commissioned Adult Acute Inpatient Capacity and Occupancy

This chart shows the amount of Acute Inpatient capacity that has been commissioned and the extent to which it is used - its "occupancy" - by patients admitted to hospital. The occupancy is shown as including leave days (the number of days that patients need hospital beds for including whilst they are on leave away from the ward) and not including leave days (the number of days that the patients are actually on the wards).



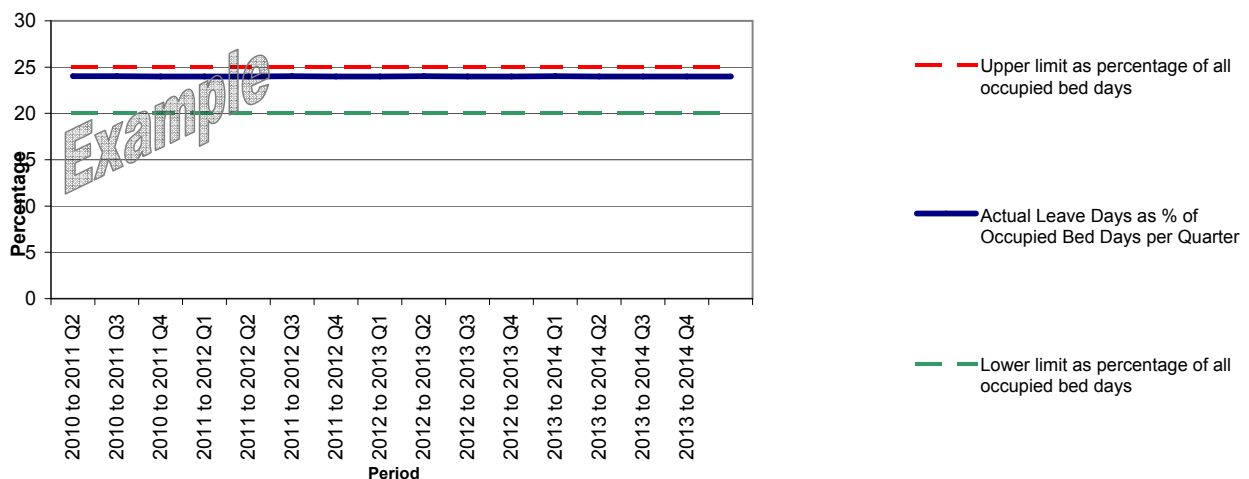
Use this drop down menu to choose to show Commissioned Capacity and Occupancy as a number of beds, or as a percentage.

Commissioned and Actual Occupancy as bed days



Chart 3.2 Patients Leave Days

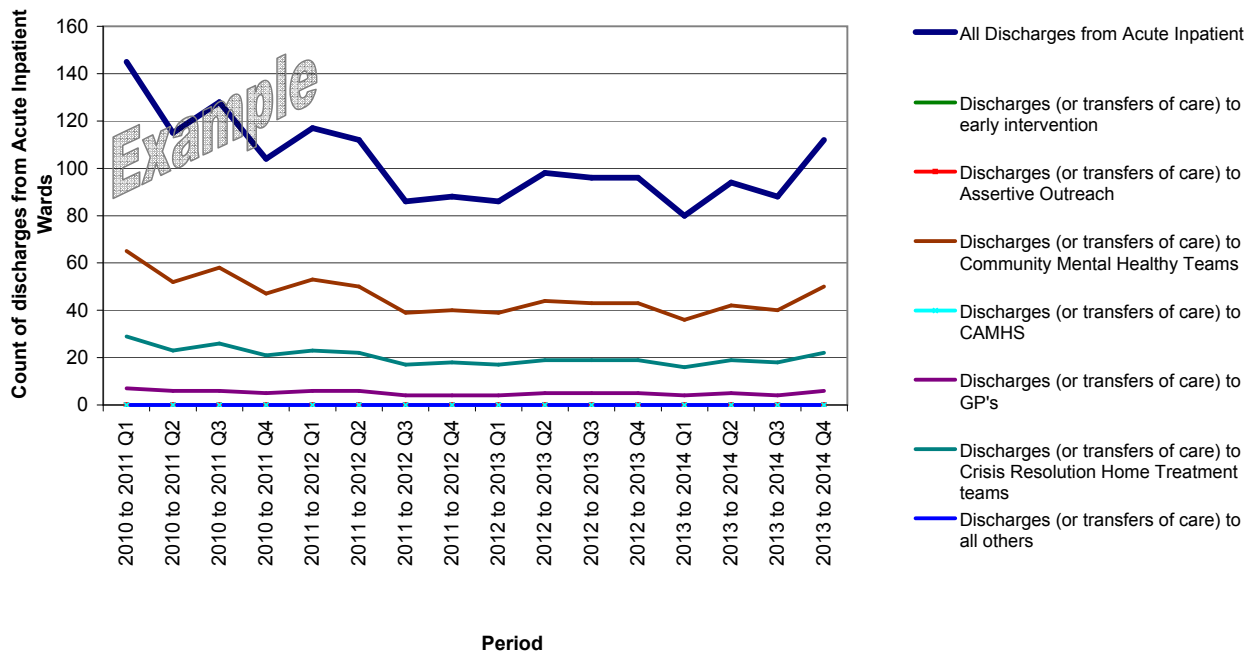
This chart shows the number of days patients have taken as days leave away for the ward and the lower and upper "limits" or expectations as to the proportion of occupied bed days that would be reasonably used as leave days, for example as part of managing patients discharge from hospital. (the "limits" are set using the controls on the Commissioning Data Input Sheet).



Use this drop down menu to choose to show leave as number of days or as a percentage.

Chart 3.5 Discharges from Adult Acute Inpatient Services by Destination

This chart shows the number of patients discharged from Acute Inpatient Wards, having completed an episode of inpatient care. Using the controls below the chart can show the discharges as an actual number or as a percentage of total number of discharges for each period.



Use this drop down menu to choose to show the discharges as a count or as a percentage.

Count of discharges from Acute Inpatient Wards

Tick item for inclusion in Chart

- Discharges (or transfers of care) to early intervention
- Discharges (or transfers of care) to Assertive Outreach
- Discharges (or transfers of care) to Community Mental Healthy Teams
- Discharges (or transfers of care) to CAMHS
- Discharges (or transfers of care) to GP's
- Discharges (or transfers of care) to Crisis Resolution Home Treatment teams
- Discharges (or transfers of care) to all others

3.7 Readmissions to Inpatient Wards

This chart shows the number of patients who have been re-admitted to an Acute Mental Health Ward within 29 days of a previous discharge for acute inpatient care.

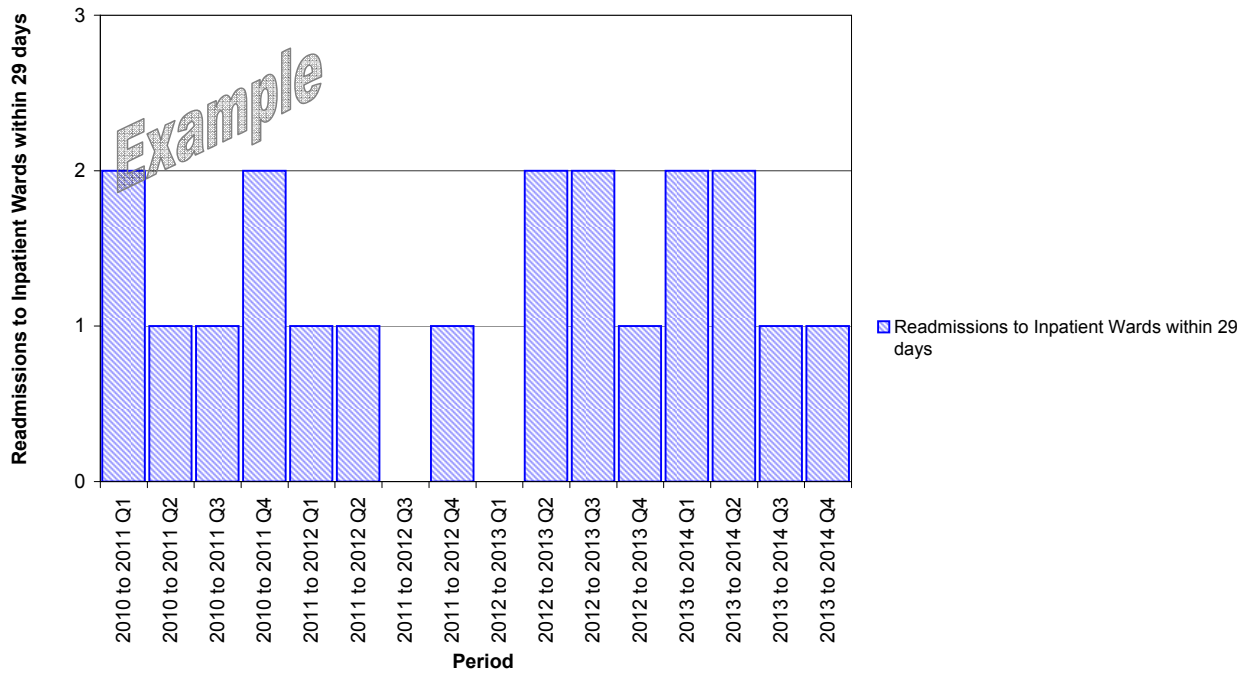
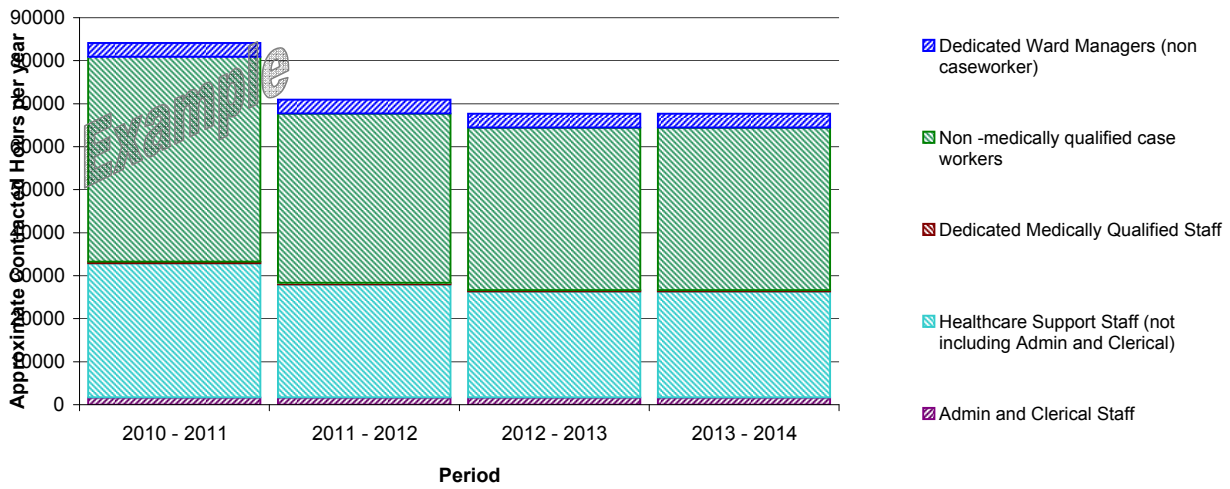


Chart 3.6 Adult Acute Inpatient Workforce

This chart and table shows the Acute Inpatient workforce for each year. The approximate 'hours per year' are calculated on the basis of non medical whole time equivalents being contracted to work 1642.5 hours per year and for medical sessions to be 4 hours each.



Staff Type	Approximate Hours per year (WTE's or medical sessions) per Staff Type			
	2010 - 2011	2011 - 2012	2012 - 2013	2013 - 2014
Dedicated Ward Managers (non caseworker)	3285 (2 WTE's)	3285 (2 WTE's)	3285 (2 WTE's)	3285 (2 WTE's)
Non -medically qualified case workers	47632.5 (29 WTE's)	39420 (24 WTE's)	37777.5 (23 WTE's)	37777.5 (23 WTE's)
Dedicated Medically Qualified Staff	332 (83 Medical Sessions)	332 (83 Medical Sessions)	332 (83 Medical Sessions)	332 (83 Medical Sessions)
Healthcare Support Staff (not including Admin and Clerical)	31207.5 (19 WTE's)	26280 (16 WTE's)	24637.5 (15 WTE's)	24637.5 (15 WTE's)
Admin and Clerical Staff	1642.5 (1 WTE's)	1642.5 (1 WTE's)	1642.5 (1 WTE's)	1642.5 (1 WTE's)
All	84099.5 hours per year	70959.5 hours per year	67674.5 hours per year	67674.5 hours per year